

Universal Bracket | SKU: AE-UB-W (white), AE-UB-B (black)

For mounting the emitter to a wall or ceiling. Rotates in 45-degree increments for optimal sound dispersion. Ships with screws and screw anchors. Compatible with both Qt Active Emitter and Qt Standard Emitter. Available in white or black.

DIMENSIONS:

Cylinder length: 4" (10.16 cm)

Bracket height: 3.625" (9.21 cm)

Cylinder diameter: 3.5" (8.89 cm)

Bracket length: 2.5" (6.1 cm)

Bracket width: 3.75" (9.53 cm)

Weight: 3.9 oz. (110.56 g)



Beam Bracket | SKU: AE-BB-W (white), AE-BB-B (black)

For mounting the emitter to exposed I-beams or trusses. Ships with bolt for attaching clamp to cylinder and for attaching clamp to beams. Compatible with both Qt Active Emitter and Qt Standard Emitter. Available in white or black.

DIMENSIONS:

Cylinder length: 4" (10.16 cm)

Clamp width: .94" (2.39 cm)

Cylinder diameter: 3.5" (8.89 cm)

Clamp height: 1.5" (3.81 cm)

Clamp opening: .95" (2.4 cm)

Clamp length: 1.75" (4.45 cm)

Weight: 4.2 oz. (119.07 g)



Pendant Mount | SKU: PM-W (white), PM-B (black)

Offers a simple and attractive way to install Qt Active or Standard Emitters in an open or raised ceiling space and suspends them at the optimum height for best coverage. Includes pendant mount top and cylinder, cable, and cable box cover assembly.

DIMENSIONS:

Cylinder length: 2.1" (5.4 cm)

Max. drywall depth: .75" (1.9 cm)

Cylinder diameter: 3.5" (8.9 cm)

Material: PC/ABS

Weight: 1.2 oz. (34 g)

Color: White or Black



Drywall Mount | SKU: DM

For mounting the emitter into drywall ceilings. Compatible with both Qt Active Emitter and Qt Standard Emitter.

DIMENSIONS:

Cylinder length: 2.1" (5.4 cm)

Max. drywall depth: 0.75" (1.9 cm)

Cylinder diameter: 3.5" (8.9 cm)

Material: PC/ABS

Weight: 1.2 oz. (34 g)

Color: White



Drywall Conduit Mount | SKU: CM

For mounting the emitter into hard ceilings in areas requiring conduit mounting. Compatible with both Qt Active Emitter and Qt Standard Emitter.

DIMENSIONS:

Cylinder length: 4" (10.2 cm)

Weight: 6.5 oz. (184 g)

Cylinder diameter: 3" (9.5 cm)

Material: Steel enclosure with steel springs

Conduit hole diameter: 0.75" (1.9 cm)

Color: White



Plenum Back Can | SKU: PB

For mounting the emitter into acoustic ceiling tile in regions with special fire and/or conduit requirements. Only compatible with Qt Standard Emitter.

DIMENSIONS:

Cylinder length: 4.5" (11.4 cm)

Cylinder diameter: 2.7" (6.9 cm)

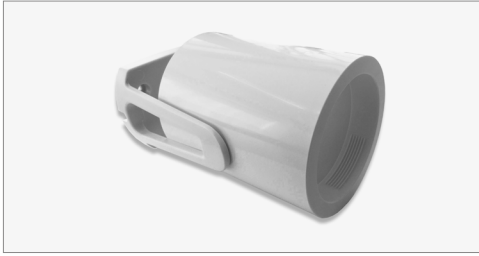
Weight: 2.8 oz (79 g)

Conduit hole diameter: 0.75" (1.9 cm)

Max tile depth: 1.5" (3.8 cm)

Material: Aluminum

Color: Silver



Universal Bracket | SKU: AE-UB-W (white), AE-UB-B (black)

For mounting the emitter to a wall or ceiling. Rotates in 45-degree increments for optimal sound dispersion. Ships with screws and screw anchors. Compatible with both Qt Active Emitter and Qt Standard Emitter. *Available in white or black.*

DIMENSIONS:

Cylinder length: 4" (10.16 cm)	Bracket height: 3.625" (9.21 cm)
Cylinder diameter: 3.5" (8.89 cm)	Bracket length: 2.5" (6.1 cm)
Bracket width: 3.75" (9.53 cm)	Weight: 3.9 oz. (110.56 g)



Beam Bracket | SKU: AE-BB-W (white), AE-BB-B (black)

For mounting the emitter to exposed I-beams or trusses. Ships with bolt for attaching clamp to cylinder and for attaching clamp to beams. Compatible with both Qt Active Emitter and Qt Standard Emitter. *Available in white or black.*

DIMENSIONS:

Cylinder length: 4" (10.16 cm)	Clamp width: .94" (2.39 cm)
Cylinder diameter: 3.5" (8.89 cm)	Clamp height: 1.5" (3.81 cm)
Clamp opening: .95" (2.4 cm)	Clamp length: 1.75" (4.45 cm)
	Weight: 4.2 oz. (119.07 g)



Pendant Mount | SKU: PM-w (white), PM-W (black)

Offers a simple and attractive way to install Qt Active or Standard Emitters in an open or raised ceiling space and suspends them at the optimum height for best coverage. Includes pendant mount top and cylinder, cable, and cable box cover assembly.

DIMENSIONS:

Cylinder length: 2.1" (5.4 cm)	Max. drywall depth: 0.75" (1.9 cm)
Cylinder diameter: 3.5" (8.9 cm)	Material: PC/ABS
Weight: 1.2 oz. (34 g)	Color: White



Drywall Mount | SKU: DM

For mounting the emitter into drywall ceilings. Compatible with both Qt Active Emitter and Qt Standard Emitter.

DIMENSIONS:

Cylinder length: 2.1" (5.4 cm)	Max. drywall depth: 0.75" (1.9 cm)
Cylinder diameter: 3.5" (8.9 cm)	Material: PC/ABS
Weight: 1.2 oz. (34 g)	Color: White



Drywall Conduit Mount | SKU: CM

For mounting the emitter into hard ceilings in areas requiring conduit mounting. Compatible with both Qt Active Emitter and Qt Standard Emitter.

DIMENSIONS:

Cylinder length: 4" (10.2 cm)	Weight: 6.5 oz. (184 g)
Cylinder diameter: 3" (9.5 cm)	Material: Steel enclosure with steel springs
Conduit hole diameter: 0.75" (1.9 cm)	Color: White



Plenum Back Can | SKU: PB

For mounting the emitter into acoustic ceiling tile in regions with special fire and/or conduit requirements. Only compatible with Qt Standard Emitter.

DIMENSIONS:

Cylinder length: 4.5" (11.4 cm)	Conduit hole diameter: 0.75" (1.9 cm)
Cylinder diameter: 2.7" (6.9 cm)	Max tile depth: 1.5" (3.8 cm)
Weight: 2.8 oz (79 g)	Material: Aluminum
	Color: Silver