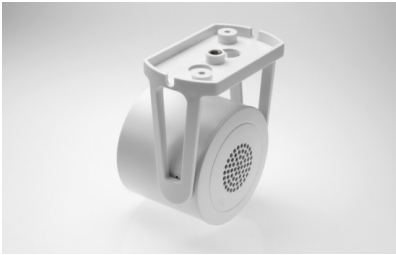


## EMITTER HOUSING VARIATIONS AND INSTALLATION

Not every space can accommodate the standard ceiling tile installation of Qt Quiet Technology™ sound masking emitters. Other installation methods include:

### UB-W and UB-B – EXTERNAL EMITTER MOUNT

Flexible emitter housing for non-ceiling tile installation. Joint allows horizontal or vertical mounting on wooden beams, walls or other surfaces. *Emitter sold separately.*



<b>Cylinder Length:</b>	3.9 inches (9.9 cm)
<b>Cylinder Diameter:</b>	3.3 inches (8.4 cm)
<b>Weight:</b>	3.3 oz (without emitter); 94g
<b>Color:</b>	White or Black
<b>Material:</b>	PB/ABS
<b>Mounting means:</b>	Ceiling/wall mount with 2 #8 screws and universal bracket (#8 screws, hollow wall inserts and bracket included).
<b>Optional mounting:</b>	¼-20 threaded rod (not included)

### ASSEMBLY AND MOUNTING:

#### Mounting to a wooden beam or the wall (most common):

1. Separate the cylinder and bracket. Remove ring from back of emitter.
2. Slide the emitter into the cylinder and turn clockwise to lock in place. (If the emitter doesn't turn easily, remove the emitter, rotate it 180 degrees and repeat.)
3. Snake the input and output cables with RJ-45 connectors through the two larger holes on the bracket.
4. Secure the bracket to the beam or wall using screws (and hollow wall inserts if necessary) in the small outer holes.
5. Connect the input and output cables to their respective parts on the back of the emitter.
6. Finally, connect the cylinder to the bracket at the desired angle – either pointing directly down or angled into the workspace.



#### Hanging from cement, metal, grated or other unusual ceilings:

**(NOTE: this requires purchasing a ¼-20 threaded rod that is not included.)**

1. Purchase a ¼ -20 threaded rod. These come in various lengths from 2' to over 20'. Depending on the installation, you may also need a drywall anchor.
2. Separate the cylinder and bracket. Remove ring from back of emitter.
3. Slide the emitter into the cylinder and turn clockwise to lock in place. (If the emitter doesn't turn easily, remove the emitter, rotate it 180 degrees and repeat.)
4. Attach the rod to the ceiling using a threaded rod anchor and/or drywall anchor. Be sure the threaded end is pointing down into the space.
5. Attach the threaded end of the rod to the small hole in center of bracket. Turn clockwise until tight.
6. Snake the input and output cables with RJ-45 connectors through the two larger holes on the bracket.
7. Connect the input and output cables to their respective parts on the back of the emitter.
8. Finally, connect the cylinder to the bracket at the desired angle— either pointing down or angled into the space.



## **BB-W and BB-B – EXTERNAL EMITTER MOUNT WITH BEAM CLAMP BRACKET**



Optional emitter housing for non-ceiling tile installation. Beam clamp with two threaded holes attaches the External Emitter Mount to an I-beam. May also be used on some conduit. ***Emitter sold separately. BB-W and BB-B replace EEM-2.***

<b>Cylinder Length:</b>	3.9 inches (9.9 cm)
<b>Cylinder Diameter:</b>	3.3 inches (8.38 cm)
<b>Weight:</b>	4.0 oz (without emitter); 8.9 oz (with emitter)
<b>Cylinder Color:</b>	White or Black
<b>Beam Clamp Color:</b>	White or Black
<b>Jaw opening:</b>	0.95 inches (2 cm)
<b>Cylinder Material:</b>	PVC
<b>Mounting means:</b>	Beam mount with clamp and 2 screws (included).



### **ASSEMBLY AND MOUNTING:**

1. Use smaller screw to attach beam clamp to the cylinder as indicated in photo.
2. Slide the emitter into the cylinder and turn clockwise to lock in place. (If the emitter doesn't turn easily, remove the emitter, rotate it 180 degrees and repeat.)
3. Use larger screw to secure entire unit to the I-beam or conduit.
4. Finally, connect the input and output cables to the appropriate RJ-45 jacks on the back of the emitter.

## **CM – CONDUIT MOUNT**



Optional emitter housing for conduit installation. Similar to a recessed lighting fixture, this emitter mount is installed in a hard ceiling. ***Emitter sold separately. CM replaces DEM-2.***

<b>Height:</b>	3.88 inches (9.85 cm)
<b>Diameter:</b>	2.98 inches (7.58 cm)
<b>Weight:</b>	6.7 oz (without emitter); 11.6 oz (with emitter)
<b>Color:</b>	Flat White
<b>Materials:</b>	Enclosure - steel; Housing Collar- steel/aluminum
<b>Clamping means:</b>	Ceiling-mounted with clips
<b>Maximum drywall depth:</b>	3/4"



**Figure 1**

### **ASSEMBLY AND MOUNTING:**

1. Drill a 3" (7.62 cm) diameter hole into drywall ceiling at emitter location.
2. Separate enclosure from housing collar.
3. Insert clips into enclosure as shown in Figure 1. Thread curved end of each metal bracket through the hole in the inside of the housing. **Do not lock brackets in place until enclosure is mounted in ceiling.**
4. Slide emitter into housing collar.
5. Snake input & output cables through hole on top of enclosure and connect to emitter as shown in Figure 2.
6. With the emitter still separated from enclosure (as shown in Figure 2), push complete housing receptacle into ceiling hole and lock clips into place.
7. Snap emitter with housing collar into the housing receptacle.



**Figure 2**

#### NOTES:

If a conduit connector is required, attach a ½" EMT connector (not included) to the back of this housing. This type of connector is available from Home Depot or any hardware supplier. (Sample part: Halex 62705B)

The CM requires a hole saw that is 3" or 76mm. An example is the Milwaukee Hole Saw 3" (76mm) with 4/6 teeth – part # 49-56-0170. This tool is available online at [www.milwaukeeconnect.com](http://www.milwaukeeconnect.com) or from other retailers.

#### **DM – DRYWALL EMITTER MOUNT**

This light weight, plenum rated plastic mount is manufactured in the USA, complying with BAA standards.

**Height:** 2.10" (54mm)  
**Diameter:** 3.52" (89 mm)  
**Weight:** 1.2 oz (without emitter); 6.0 oz (with emitter)  
**Color:** White  
**Materials:** Housing: Plenum rated plastic with spring-steel springs  
**Clamping means:** Ceiling-mounted with springs  
**Maximum drywall depth:** 1"

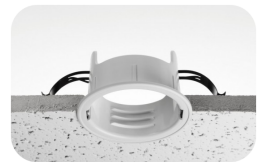


#### **Assembly and Mounting**

1. Drill a 3" (76 mm) diameter hole into drywall ceiling at emitter location.
2. Insert springs into mount as shown in Fig. 1. Thread curved end of each metal spring through the top hole, keeping the lip of the spring flush with the outside of the housing. Push flat end of the spring into the bottom hole, ensuring that the springs are not in lock position.
3. Slide emitter mount, with spring in place into the pre drilled 3" hole.
4. Once mount is flush with the drywall, push springs out so that they are locked in place. See fig. 2
5. Connect the input and output cables to the emitter.
6. Place emitter into the mount. (Fig. 3). Use the provided installation key and turn clockwise to secure emitter in place (Fig. 4).



**Figure 1**



**Figure 2**



**Figure 3**



**Figure 4**

