

Updating Qt PRO 300/600 Control Module Software (Version 6.7.1)

The following sequence uses the example of updating to Version 6.6.1, but the process also applies to later versions of the firmware. Download the zip file that contains the update folder and its files and “unzip” the zip file. The following files are found in the update folder:

[Qt 300-600 Update Instructions.pdf](#) (this document)

[Updater.exe](#) (the utility that performs the update)

***Note: Incompatible with Windows 10**

[QtPro_v6.7.1.cry](#) (The new software image ends in “.cry”. This file should be extracted from the zip)

[6.7.1 ReadMe](#) (Important ReadMe that assesses the current system to make sure an update can be performed)

[QtCommandCenterSetup](#) (utility to setup and control QtPro)

***Note: Incompatible with QtPro Firmware Versions: 6.5.0, 6.5.1, 6.6.0, and 6.6.1**

IMPORTANT NOTE:

Updating your Qt Control Module software will reset your system settings!

In order to recover your settings after the update, you have two options:

- A. Use the new utility, built into the Qt Command Center software, to back up and then restore your system settings automatically. If you chose this option, read the details concerning Qt Command Center below (optional steps i – ix) and then perform Steps 17- 19 of the Qt Control Module software update process.
- B. Print out a hard copy of your current settings (**recommended as a fail-safe even if you choose Option A**), and then re-enter the same settings manually after the update. See steps 1 – 4 and 20 of the Qt Control Module software update process.

(If you choose option B, then you do not have to install Qt Command Center, unless you wish to do so for its additional functions besides backup and restore.)

To update your Qt Control Module software, first capture the current configuration:

1. Power down your both your PC and the Qt.
2. Connect your PC's Ethernet port directly to the QT's Ethernet port. NOTE: you may need to turn off the WIFI interface of the PC.
3. Power up the Qt, then power up your PC. Bring up a browser window on your PC. The Qt will get an IP address if in DHCP mode or share the static IP address so that the two machines can communicate.
4. Log into YOUR Qt control module¹ via the browser. Enter the Qt's IP address in your browsers address bar and hit enter. Fill in your login and password (default is login: admin and password: secret).

To print operational settings, follow these steps:

- Click on the **Printout** tab to bring-up a page that shows the unit's current operational settings.

cambridge Qt Quiet Technology [™] SOUND MANAGEMENT System Monitoring and Control		Operations Administration Help Printout						
Service		Zone 1 Zone 2 Zone 3 Zone 4 Zone 5 Zone 6						
Unit Name		Zone Level Controls						
Location		Day Volume						
Serviced By	Cambridge Sound Management	Night Volume						
Phone No.	617-349-3779	Input A						
		Input B						
		Begin Ramp to Day (AM)						
		Begin Ramp to Night (PM)						
		Ramp Interval (minutes)						
		Saturday Schedule						
		Sunday Schedule						
Zone Names		Masking Equalizers						
Zone 1	Zone 1	200						
Zone 2	Zone 2	250						
Zone 3	Zone 3	315						
Zone 4	Zone 4	400						
Zone 5	Zone 5	500						
Zone 6	Zone 6	630						
		800						
		1000						
		1250						
		1600						
		2000						
		2500						
		3150						
		4000						
		5000						
Networking and Security		Input A Equalizers						
Panel Lock	Unlocked	250						
MAC Address	0050C2000021	500						
DHCP Enabled	yes	1000						
IP Address	169.254.1.1	2000						
Gateway	169.254.1.1	4000						
Netmask	255.255.0.0	8000						
Primary DNS	169.254.1.1							
Secondary DNS	0.0.0.0							
Hostname	QT21							
Username	admin							
Password	secret							
Notification of Errors								
Email Address								
Server Name								
Port Number	25							
Username								
Password								
Time Zone								

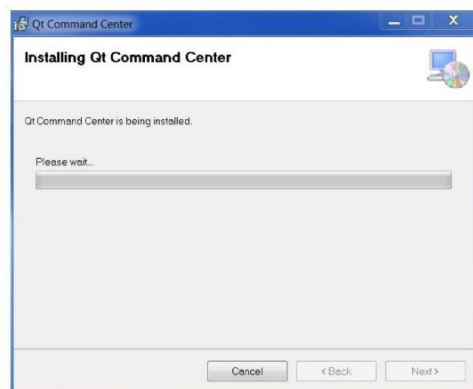
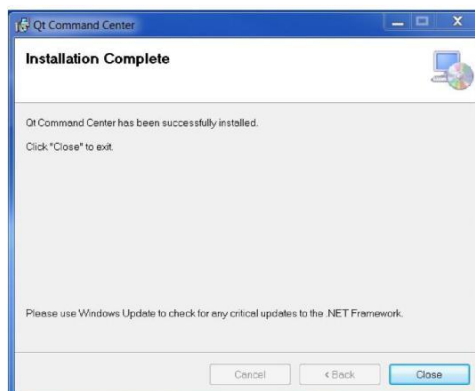
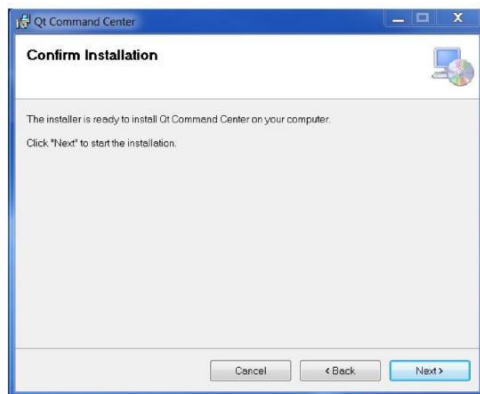
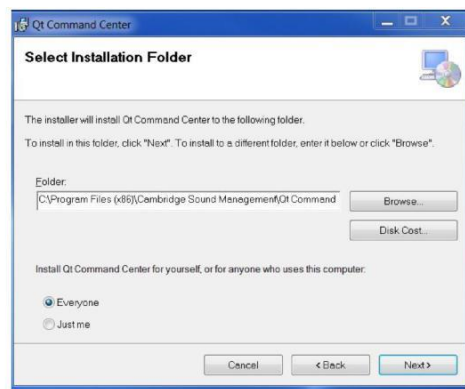
Note: Qt 600 printout screen shown above, but this is the same for the Qt 300 with only 3 zones

¹ If you are not familiar with connecting to and logging into a control module, refer to the Operations Guide that came with your unit.

- Print this page to obtain a paper record of the unit’s operational parameters. Alternately, create a PDF or screenshot. In many browsers this can be accomplished by right clicking in the window and selecting the “print” function. This record will allow you to reset the same parameters after the upgrade.
- You can now close the System Monitor window.

OPTIONAL: To install the Qt Command Center, follow these steps:

- Run the [QtCommandCenterSetup](#) installer to install the utility



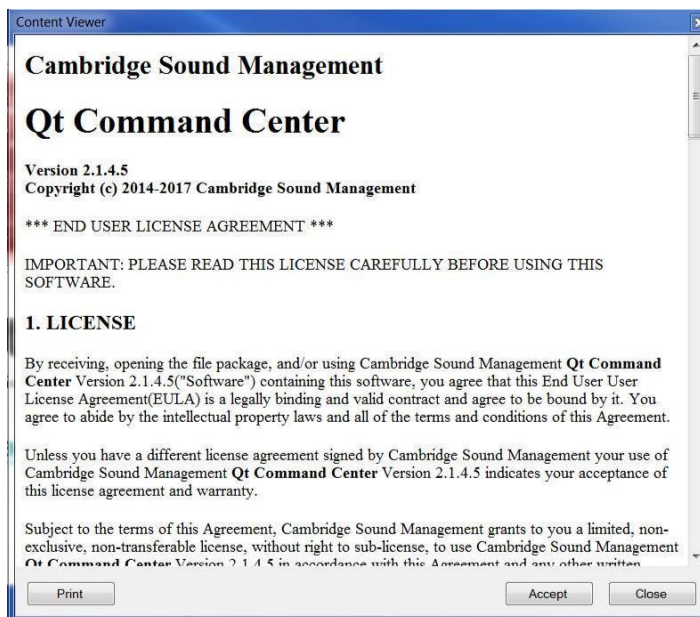
- ii. Once installed, run QtCommandCenter



- iii. Login using user: 'admin' and password: 'secret'

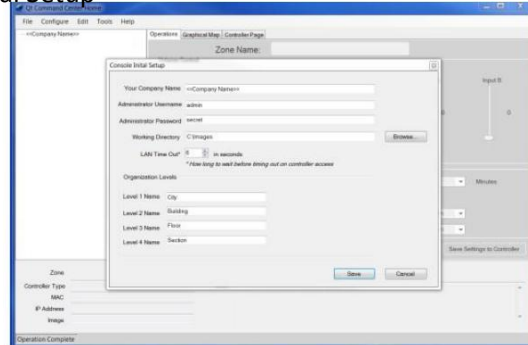
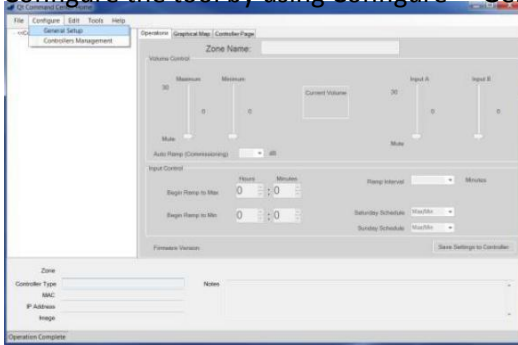


- iv. Accept End User License Agreement

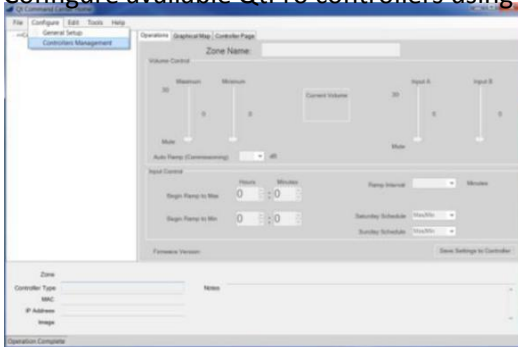


*Note: Version 2.1.4.5 shown, but 3.0.1.0 is the latest

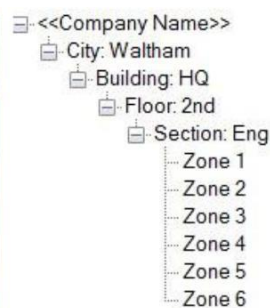
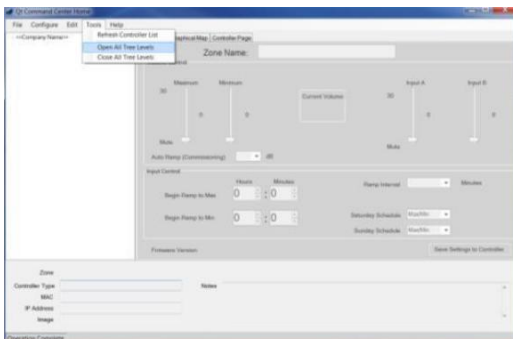
- v. Configure the tool by using Configure → General Setup



- vi. Configure available QtPro controllers using Configure → Controllers Management



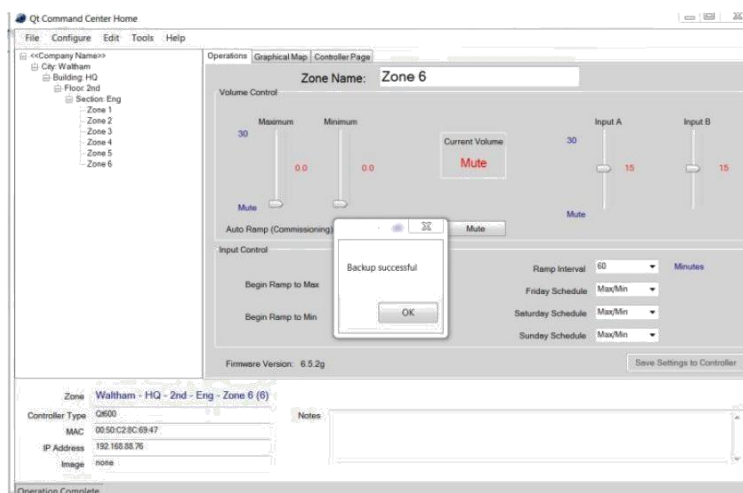
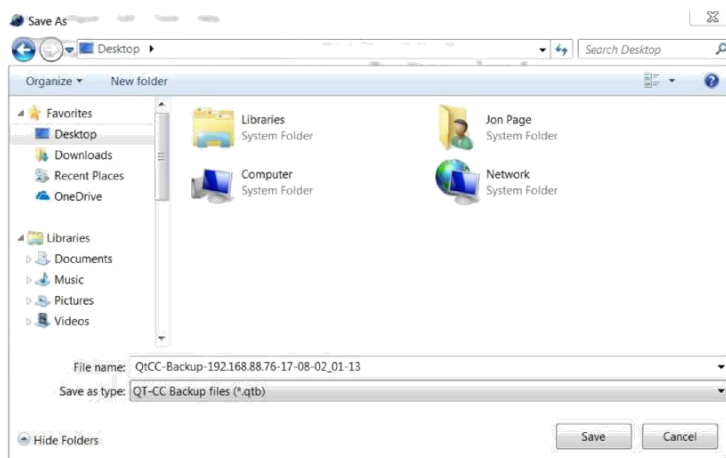
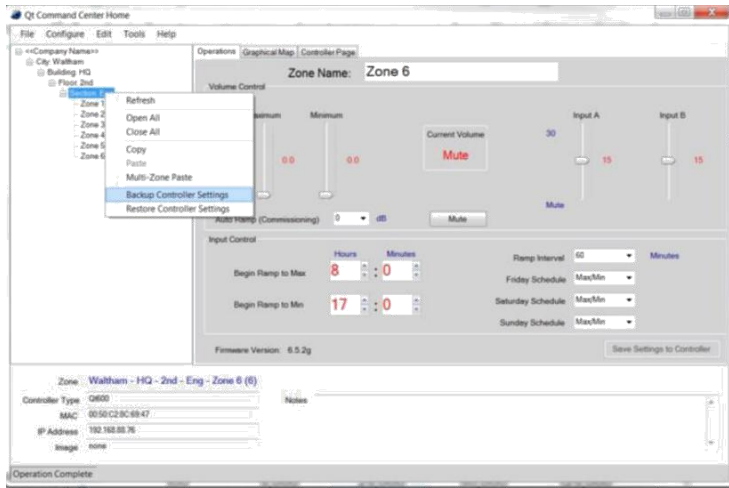
- vii. After configuration is complete, go to Tools → Open All Tree Levels. Verify that the tool communicates properly with the controllers.



- viii. Using your mouse, left click on the 'Section' (lowest level)

- ix. Select 'Backup Controller Settings' to save all user settings into a text file.

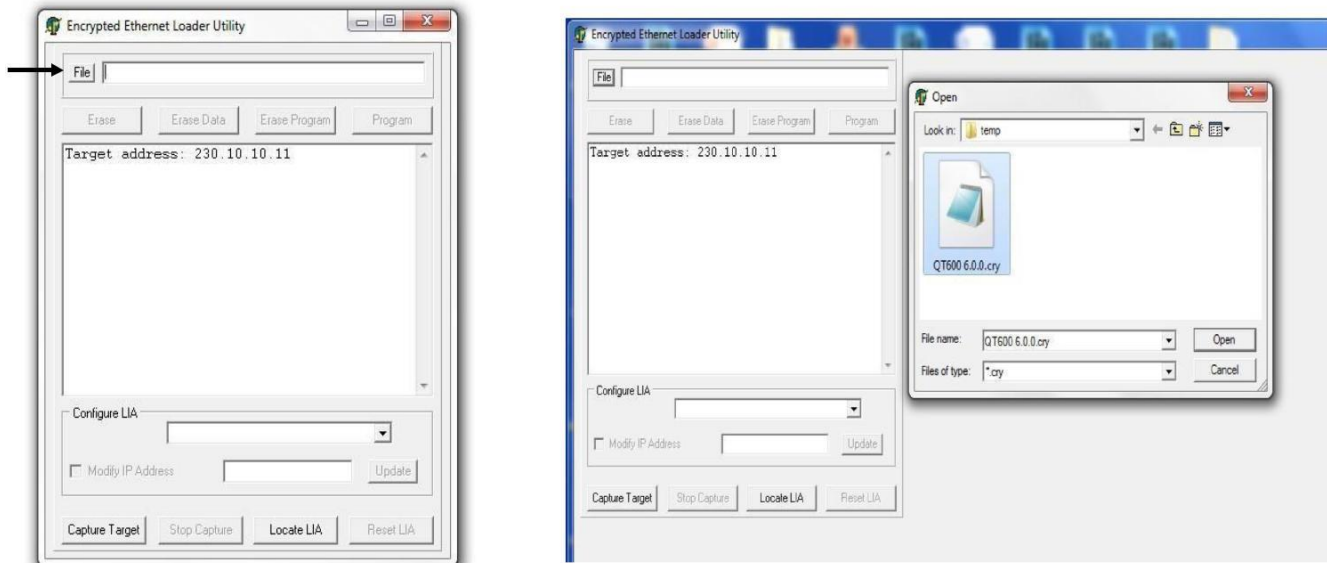
*Note: Backup files from previous versions of QtCC are not compatible.



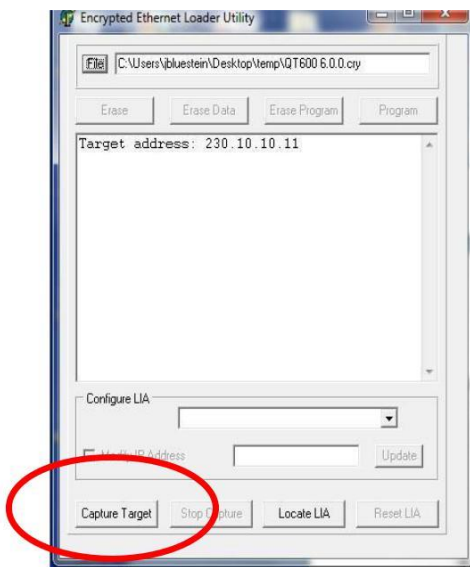
*Note: QtPro firmware versions 6.5.0, 6.5.1, 6.6.0, and 6.6.1 are incompatible with QtCC version 3.0.1.0

The following steps perform the programming of the Qt Control Module to the latest release:

5. Rename “**Updater.ex_**” to “**Updater.exe**” if needed.
6. Double click **Updater.exe** on your PC to open the **Updater**.
You may be asked to validate the program. Be sure you click ‘run’.
7. Disconnect power from the Qt 600 at this time.
8. In the **Updater** click on the **File** button and browse to and select **Ver 6.7.1.cry** (6.0.0 is shown in the pictures)

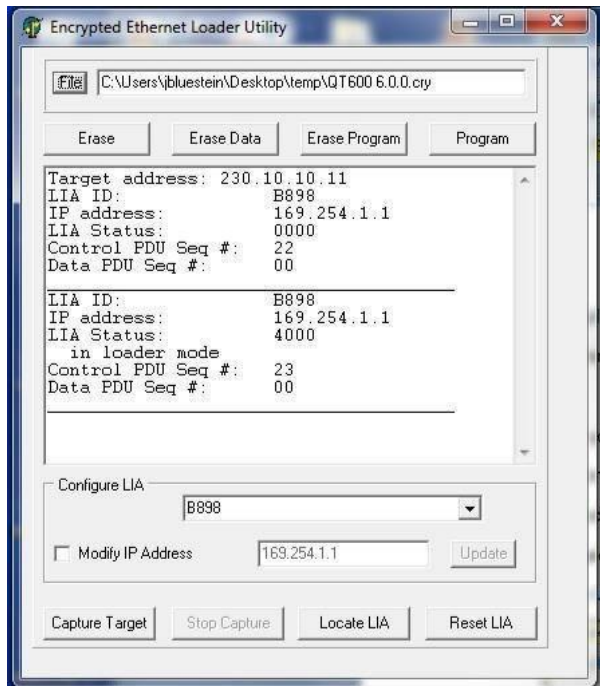


12. Still in the **Updater**, click on the **Capture Target** Button, and immediately go to the next step.



13. Connect power to the Qt 600.

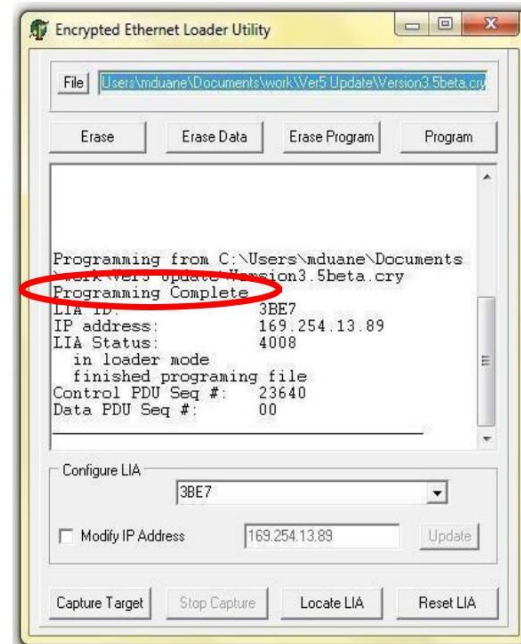
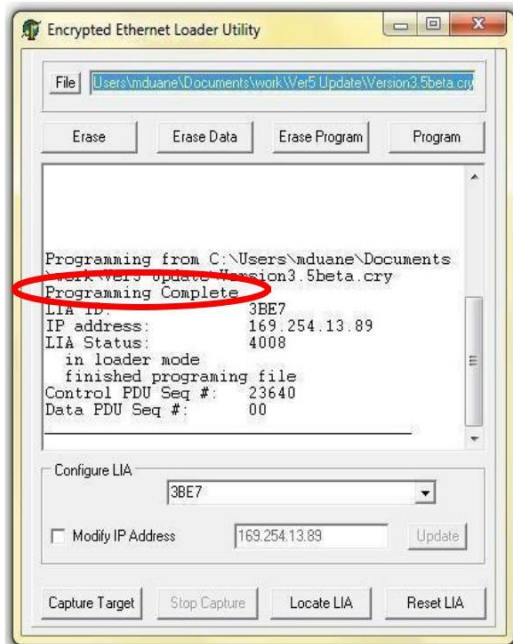
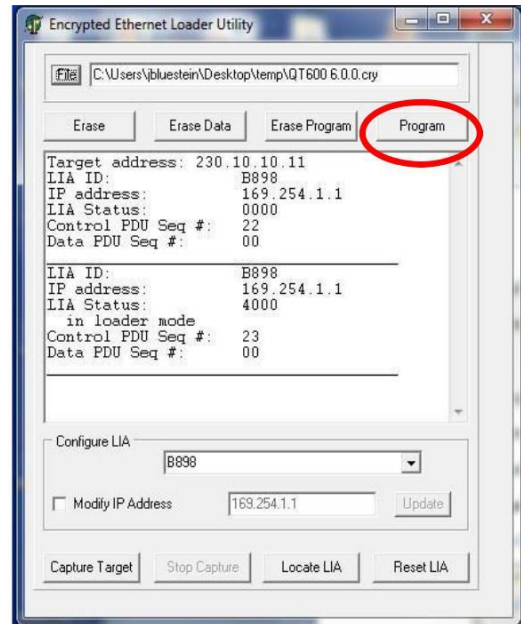
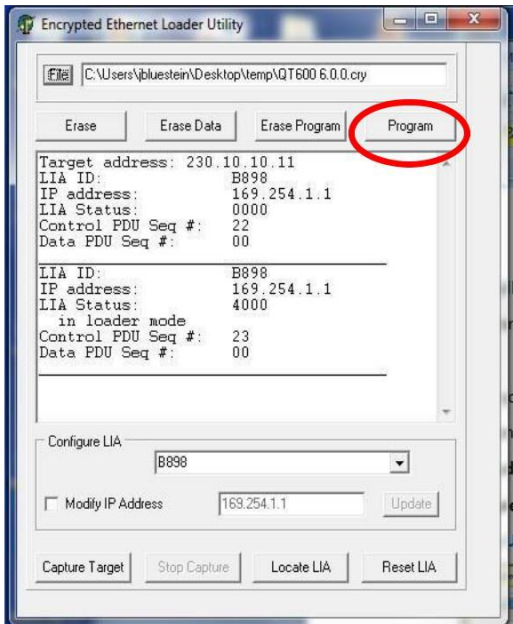
14. You will see text similar to the following displayed in the **Updater's** dialogue window (addresses may be different, etc.):



Once you see this text in the updater, move to the next step. The front screen of the control module may continue to say 'booting,' or it may be blank.

If you don't see the capture, make sure the WIFI port is turned off on the PC. Start over with the capture and powering the Qt 600 off and on.

15. In the **Updater** click on the **Program** button (be patient for the response, it may take a minute), and observe that the programming completes without error². If the programming completes without error, you will see the following displayed in the **Updater's** dialogue window (addresses may be different):



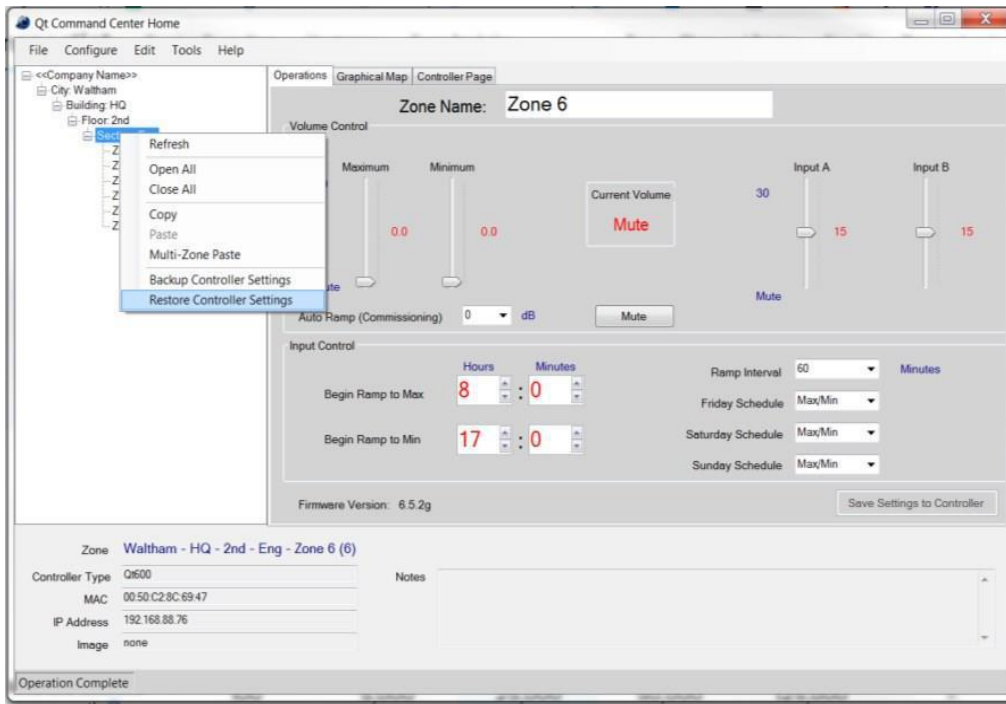
² If the update encounters a PDU out of sequence error, wait for the programming to complete and then push the Program button a second time. If the problem persists, start over with a "capture target" and power cycle.

If you see an error or get a socket disconnect, simply start over. As long as the boot code is still loaded the capture will work. Turn off the Qt 600, select capture and retry the program step.

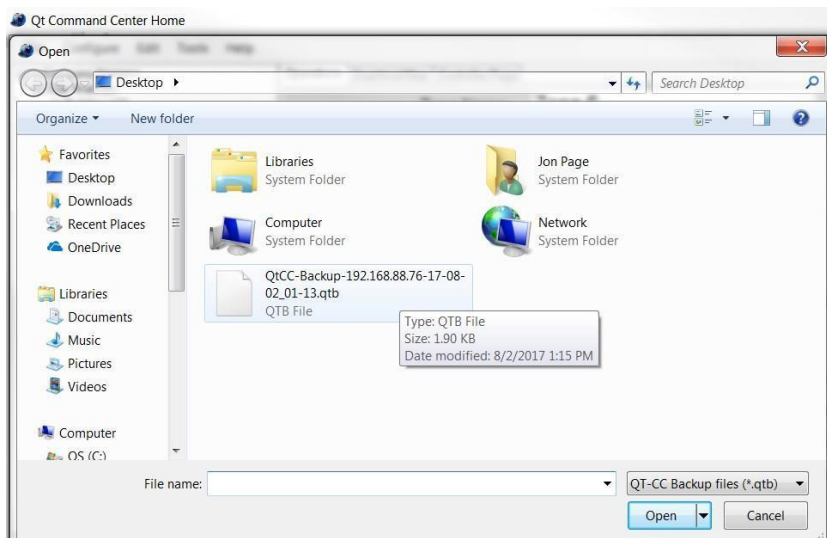
16. After programming is complete, disconnect power to the Qt 600, as the next step is a hard reset. You can now close the [Updater](#).

Restoring the system configuration automatically:

17. If you chose Option A for restoring your system settings to their pre-update values, you must do two actions simultaneously. Press and hold down the “+” button on the front panel AND at the same time apply power. Release the front panel button when you see the “Qt600 Main CPU Booting” screen appear on the LCD. This step resets the data structures for the new software.
18. Click the lowest section name and click on “restore controller settings”



Select the QtCC backup file:



19. Check that Version 6.7.1 and Status: OK appear on the control module's LCD.

Restoring the system configuration manually:

Once the LCD returns to the version/status screen, wait 60 seconds and attempt to refresh the Qt PRO System Monitoring and Control software from the web browser. If the new software does not show right away, wait another 60 seconds and check the IP address.

20. If you selected Option B for restoring your system to its pre-update settings, re-enter the operational parameters listed on the printout (see step 3 above), as necessary.